

LACE CITY *Chorus*



Music theory 1 – the staff, clef and notes
16 June 2021

The stave and clefs

Stave/staff



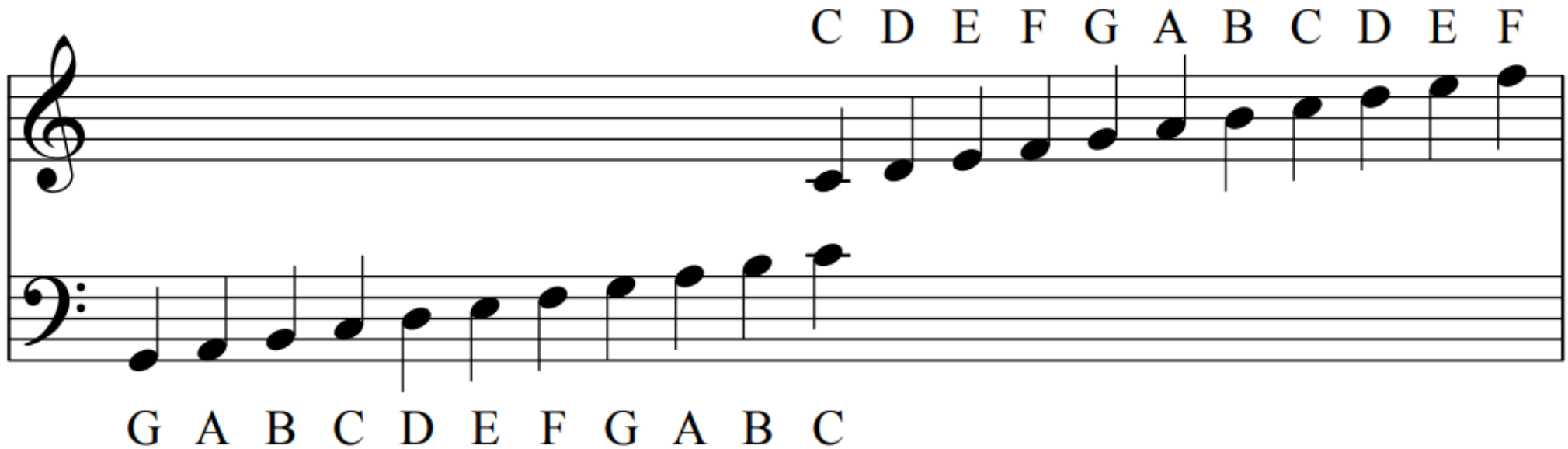
Treble clef



Bass clef

The Grand Staff

The Grand Staff



Treble Clef

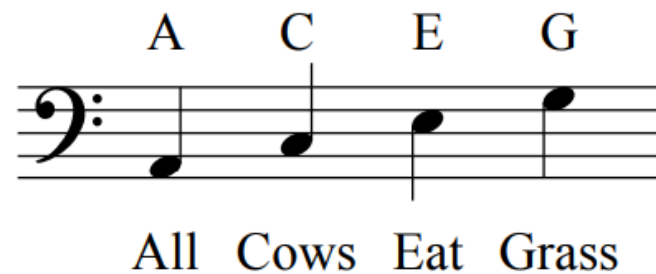
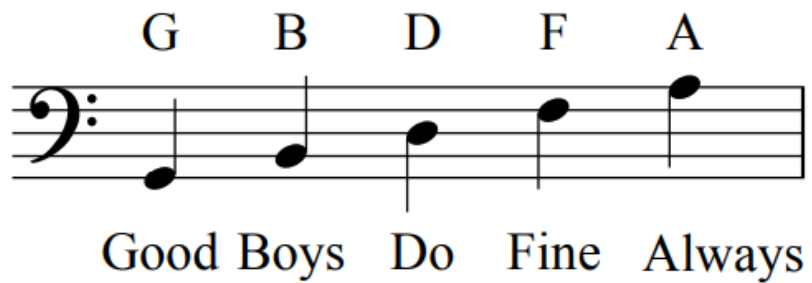
The Treble Clef



<https://www.musictheory.net/exercises/note>

Bass Clef

The Bass Clef



<https://www.musictheory.net/exercises/note>